

ORDERING GEOLOGIC EVENTS

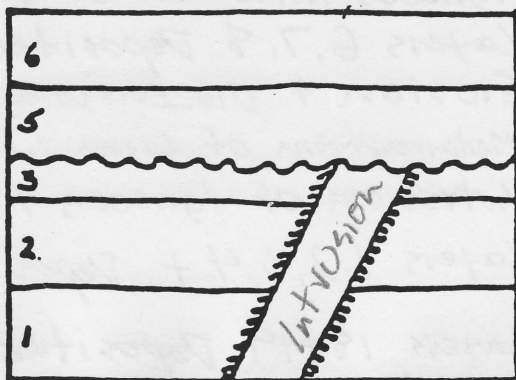
Name: Key

Period: _____

In each of the following cross-sections, correctly identify the proper order of geologic events:

Deposition, folding, faulting, erosion, uplift, tilting, intrusion

A.



6.

5.

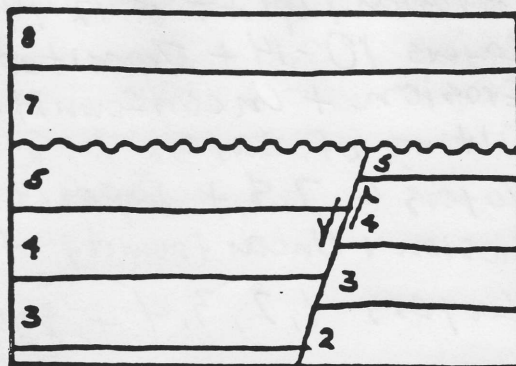
4. Layers 5 + 6 are deposited.

3. Erosion and unconformity

2. Intrusion moves into layers

1. Layers 1, 2, 3, and possibly more layers deposited

B.



6.

5.

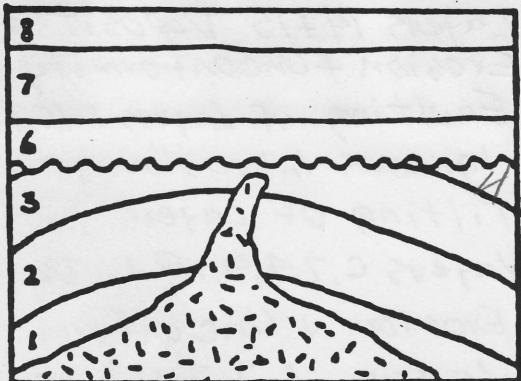
4. Layers 7 and 8 deposited.

3. Erosion and unconformity

2. Faulting of layers 1-5 +

1. Layers 1, 2, 3, 4, 5 and possibly more layers deposited.

C.



6.

5. Layers 6, 7, & 8 deposited.

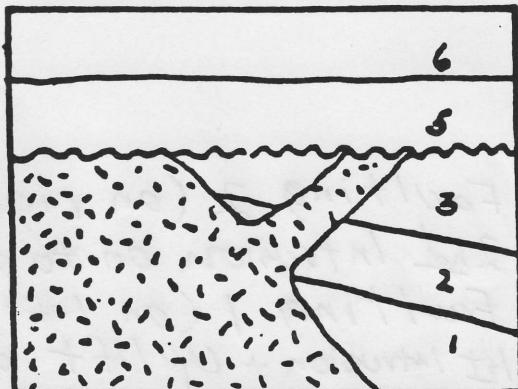
4. Intrusion of magma

3. Erosion + unconformity of layers 3+

2. Folding + uplift of layers 1, 2, 3, 4 +

1. Layers 1, 2, 3, 4 and possibly more deposited.

D.



6.

5. Layers 5 + 6 deposited.

4. Erosion and Unconformity

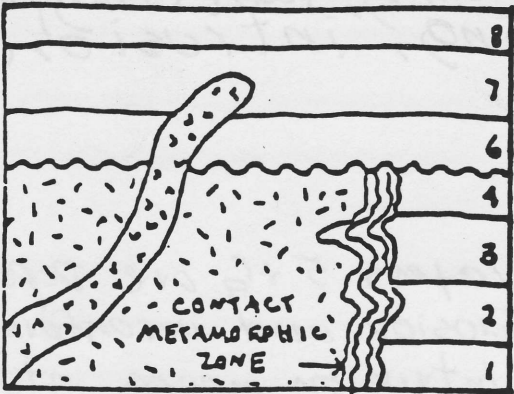
3. Tilting of 1, 2, 3 + and Dike

2. Intrusion of Igneous Dike

1. Layers 1, 2, 3 and possibly more deposited.

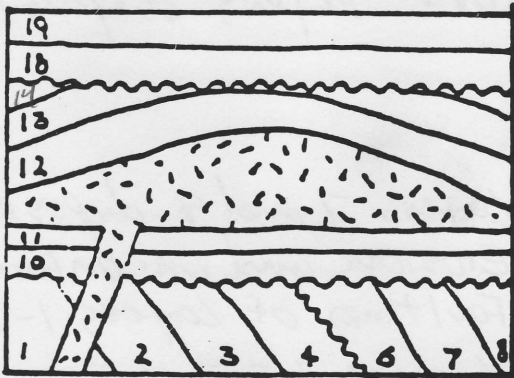
- this is the other side -

E.



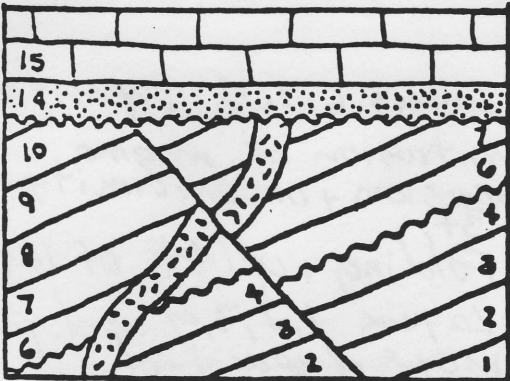
1. Layers 1, 2, 3, 4 + Deposited
2. Intrusion of Igneous Rock
3. Metamorphism of Layers 1, 2, 3, 4 +
4. Erosion + Disconformity
5. Layers 6, 7, 8 Deposited
6. Igneous Intrusion of Dike.

F.



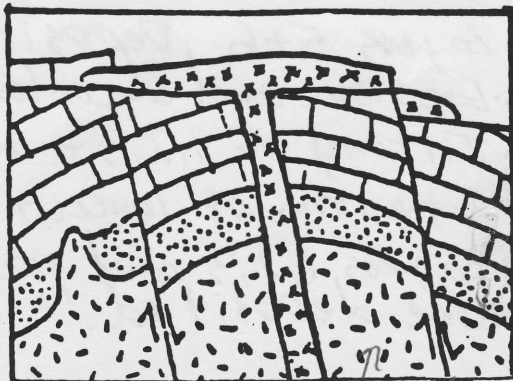
1. Layers 1, 2, 3, 4 + Deposited
2. Erosion + Unconformity of 1, 2, 3, 4 +
3. Layers 6, 7, 8 + Deposited
4. Tilting of Layers 1-8 +
5. Erosion + Unconformity of 1-8 +
6. Layers 10-14 + Deposited
7. Intrusion + uplift of 12-14 +
8. Erosion + Unconformity of 13 +
9. Layers 18 + 19 Deposited

G.



1. Layers 1, 2, 3, 4 + Deposited
2. Erosion + Unconformity of 1-4 +
3. Layers 6, 7, 8, 9, 10 + Deposited
4. Tilting of Layers 1-10 +
5. Igneous Intrusion into Layers 1-10 +
6. Faulting of Layers 1-10 + and Intrusion
7. Erosion + Unconformity of 1-10 + and Intrusion
8. Layers 14 + 15 Deposited.

H.



1. Layers 1 + 2 Deposited
2. 1st Intrusion + Uplift of Layers 1 + 2
3. Faulting 1 (on left)
4. 2nd Intrusion on to surface.
5. Faulting 2 (on right)
- 6.

Fault ① Intrusion 1
Fault ② Intrusion 2